

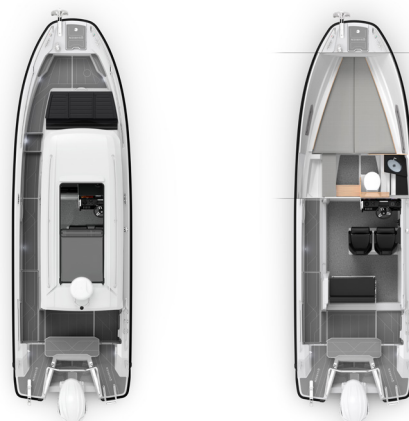


QUARKEN 27 CABIN

QUARKEN 27 CABIN + YAMAHA F300

Technical information

Length (excl. engine)	8.35 m (27.39 ft)
Beam	2.59 m (8.49 ft)
Weight (excl. engine)	2700 kg (5953 lb)
Draft to props	0.85m (2.78 ft)
Engine	300 hp
Passengers	8
Berths	2
Classification	C-Coastal
Construction	GRP
Max speed	43 kn
Fuel consumption, cruise	1.6 L/NM
Fuel capacity	300 L (79 gal)



Cabin seats, sofa & fore deck bench w. cushions in standard Niroxx upholstery, aft bench with Smartdeck. Forward cabin showing bed & electric toilet

Recommended retail price: 112 700 €

incl Yamaha F300 with SaltWater II 18" propeller. Price is EXW without VAT, taxes, freight & local handling, PDI and insurance cost

Please contact your Quarken dealer for detailed information, final quotation, and production schedule. All prices are indicative. The configurator images do not show all optional features.

Prices for model year 2026 (valid on orders until September 30th 2026). We reserve the right to modify all standard and optional specifications without prior notice. All prices are without VAT, taxes, freight & local handling, PDI and insurance cost. This document was published on 14th Jan 2026.

Standard Equipment

Construction

White GRP hull & deck with first layer vinylester resin
 GRP deck & hatches with anti-skid finishing
 Twin-stepped hull
 Bow thruster tunnel preparation
 Trailerable

Deck area

Wide & safe port-side walkway with open aft deck
 Spacious & self draining anchor locker
 Self draining cockpit with quick drain on aft deck
 Heavy duty rub rail, black
 6 x stainless steel cleats forward, mid & aft
 Locks, hinges & rails in 316 stainless steel
 Bench on foredeck
 Aft mid bench with Smartdeck cover
 Stowage for fenders and ropes inside the aft bench
 Large storage under floor
 Swimming platforms with Smartdeck
 Telescopic bathing ladder
 Quarken 3D logo on SB & port-side of hull
 Aluminum fuel tank 300l
 Aft electric bilge pump
 Flagpole
 Triple battery system
 LED navigation lights
 Light mast

Cabin

Cabin w. lockable port-side glass sliding door
 Lockable three-blade glass sliding door in the rear
 Roof structure in GRP with sliding glass roof hatch
 Full glass windscreen and wrap-around windows in light grey tint
 Windscreen wiper SB & port-side
 Windshield washer
 4 x LED ceiling spotlights
 Pilot & co-pilot seats in Niroxx fabric (rotating & length adjustable)
 Stainless steel footrest for pilot & co-pilot
 Multifunctional aft sofa in Niroxx fabric with storage in the cabin
 Footrest for multifunctional aft sofa
 Fire extinguisher storage

Helm, engine & Navigation

Yamaha F300 outboard engine, NSB2
 Yamaha DES, Digital Electric Steering
 Yamaha SBW, Steer by Wire
 Yamaha 5" LAN multidisplay
 Yamaha keyless entry system
 Yamaha EKS / Y-COP
 Yamaha Electrical power steering
 Adjustable steering wheel
 Dashboard & console panels in nonreflective dark grey finish
 Backlighted control switch panel
 1 x twin USB power outlet
 2 x backlighted cupholders on dashboard
 Storage pocket for maps in console
 Documentation bag for manuals

Forward Cabin

Large bed for two persons
 Seating cushion on portside
 Portlight with openable hatch
 1 x reading light in bow
 3 x LED roof spotlights
 Ambient lighting
 Carpet
 1 x twin USB power outlet
 Place for toilet
 Place for fresh water
 Vanity unit

Packages

Convenience package QBOPACK9

9 500 €

Wireless charging for phone
Bow thruster
Trim tabs

Garmin 12" plotter incl. Sonar through the hull (inside)
Fusion audio + 4 speakers

Premium package (only with convenience package) QBOPACK10

5 900 €

Hull windows, 4 pcs
Deck lights

Second Garmin 12" plotter
Glass panel for twin plotter installation

Weekend package QBOPACK11

6 800 €

Fridge, 50L
Shore power
Electric toilet

Fresh water
Curtain to toilet
Transom shower

Mooring package QBOPACK8

470 €

Fenders, 4 pcs
Fender ropes

Fender socks
Mooring ropes, 4 pcs

Engine Upgrade package QBO10113

3 000 €

Yamaha F350 with SaltWater II, 19" propeller

Twin Engine Upgrade package

7 400 €

2 x Yamaha F150 with Reliance 19" propeller

Comfort

Smartdeck QBO20001	2785 €	Foredeck table + sunbed QBO20008	1410 €
Foredeck cushions QBO20007	911 €	Table (aft deck & cabin) QBO20043	620 €

Technology

Windlass, bow. Incl. Remote control QBO10018	3862 €	Garmin radar GMR Fantom, White QBO10049W	3300 €
Windlass, aft deck QBO20042	5675 €	Garmin VHF 315i QBO10034	1100 €
Ebersprächer heater QBO20044	3650 €	Garmin AIS module (receiver + transmitter) QBO10035	1223 €
Yamaha Helm Master & Autopilot (Only with Twin engine and convenience packa- ge. Incl. variable bow thruster) QBO10025	8000 €	Automatic trim tabs, Zipwake QBO10003	890 €

Additional Options

Rails, aft deck QBO20020	415 €	Deck hatch, forward cabin QBO10031	872 €
Rails, foredeck QBO20021	588 €	Telescopic swimming ladder, bow QBO10052	770 €
Water-ski pylon QBO10023	768 €	LED lightbar, front QBO20077	886 €
Roof rails QBO20071	390 €	Decklight for rear QBO20076	583 €
Pentry, incl. Fresh water + stowe QBO20073	2375 €	Curtains for windows (outside) QBO20075	871 €
Roof-rack QBO20074	590 €		



QUARKEN

THE ART OF NORDIC BOATS

For further information please visit our website

www.quarken.com